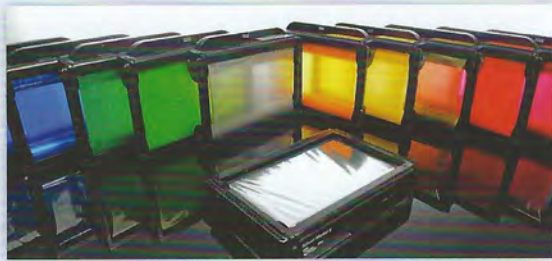
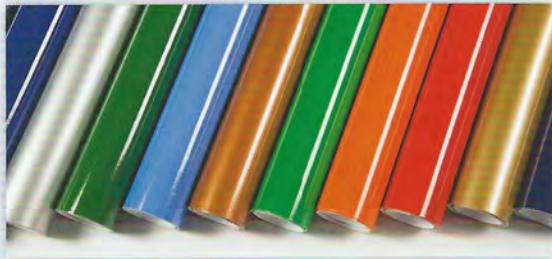


A WORLD OF COLOR

Selector guide for print and cut materials
and GerberColor™ thermal transfer foils.





Gerber Cast Vinyl, Intermediate & Specialty Films

Gerber offers a wide range of outdoor-durable self-adhesive, opaque and translucent, magnetic, holographic, reflective, and semi-rigid materials. Gerber Series 220 and 225 Cast Vinyl manufactured by 3M continue to exceed the industry standard for consistency, weed-ability, and durability. These premium films are available in over 90 colors and in 15, 24, 30 and 48 inch widths.

GerberColor Thermal Transfer Foils

GerberColor Foils are time-tested and proven thermal transfer materials, custom-formulated as part of Gerber's unique Matched Technology System™. This performance-driven series delivers:

- The durability to withstand harsh exterior and industrial environments, including abrasion and UV exposure.
- The versatility to match popular paint, vinyl, and ink colors.
- The flexibility to print from fine lines to fleet markings.
- The consistency to produce eye-catching results.



THE GERBER MATCHED TECHNOLOGY SYSTEM

Gerber EDGE READY™ materials and GerberColor Foils are specially formulated for the GERBER EDGE® Series of thermal transfer printers. Produce amazing graphics in three easy steps:

- 1 DESIGN the graphics in Gerber OMEGA™ design and output software.
- 2 PRINT using the GERBER EDGE FX™ printer on a broad range of Gerber materials.
- 3 CUT the graphics on a Gerber 15" plotter, capable of delivering custom contour kiss cuts and back cuts for instant finishing.

Terms and

All statements, to be reliable, are made in lieu of a contract to replace such liability for any injury or damage caused by the use of the product. User assumes all



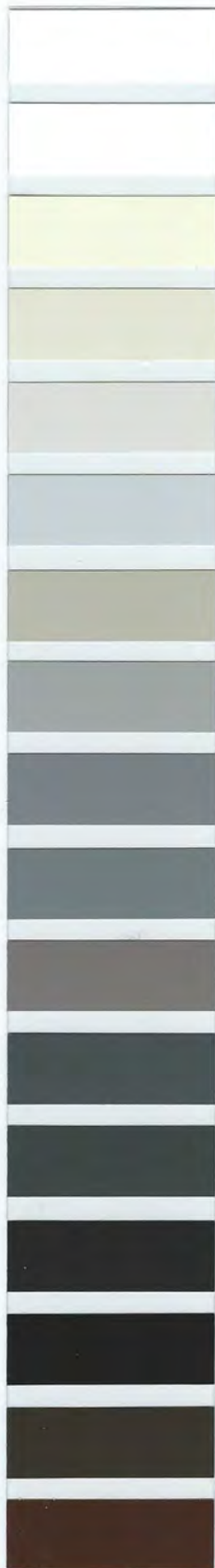
GERBER

© 2019 Gerber

For film sample
Consult current
PANTONE and
Company. Lexa
License Agree

GERBER CAST VINYL MATERIALS

HIGH PERFORMANCE 220/225 MANUFACTURED BY 3M



- ▲ MATTE WHITE
★ 220-20
225-20
- ▲ WHITE
★ 220-10
225-10
- ▲ ANTIQUE WHITE
★ 220-90
- ▲ OYSTER
★ 220-100
- ▲ PEARL GREY
★ 220-11
PANTONE® COOL GRAY 2C
- ▲ LIGHT GREY
220-121
- ▲ STONE GREY
220-81
- ▲ MEDIUM GREY
★ 220-31
225-31
PANTONE COOL GRAY 7
- ▲ MID GREY
220-61
PANTONE COOL GRAY 8C
- ▲ TRAFFIC GREY
★ 220-151
- ▲ DOVE GREY
220-91
- ▲ DARK GREY
★ 220-41
PANTONE COOL GRAY 11C
- ▲ NIMBUS GREY
220-101
- ▲ MATTE BLACK
★ 220-22
225-22
PANTONE BLACK C
- ▲ BLACK
★ 220-12
225-12
PANTONE PROCESS BLACK C
- ▲ DURANODIC
★ 220-69
- ▲ DEEP MAHOG. BROWN
★ 220-19
225-19
PANTONE 4625C



- ▲ RUSSET BROWN
★ 220-29
PANTONE 175C
- ▲ SANDSTONE
220-89
- ▲ TAN
220-39
- ▲ BEIGE
★ 220-49
225-49
- ▲ FAWN
220-99
- ▲ LIGHT LEMON YELLOW
220-65
- ▲ PRIMROSE YELLOW
★ 220-135
- ▲ BRIGHT YELLOW
★ 220-15
225-15
PANTONE 109C
- ▲ SUNFLOWER
★ 220-25
225-25
PANTONE 1235C
- ▲ CHROME YELLOW
220-145
- ▲ IMITATION GOLD
★ 220-105
PANTONE 7510C
- ▲ APRICOT
220-64
- ▲ LIGHT ORANGE
220-54
- ▲ BRIGHT ORANGE
★ 220-14
PANTONE ORANGE 021C
- ▲ INTENSE ORANGE
★ 220-134
- ▲ RED ORANGE
220-74
- ▲ TERRA COTTA
220-24



- ▲ MAGENTA
220-103
PANTONE 205C
- ▲ PROCESS MAGENTA
220-273
PANTONE 214C
- ▲ WARM RED
★ 220-253
PANTONE 485C
- ▲ PERFECT MATCH RED
★ 220-263
PANTONE 186C
- ▲ ATOMIC RED
★ 220-293
- ▲ TOMATO RED
★ 220-13
225-13
PANTONE 1795C
- ▲ IMPERIAL RED
220-93
- ▲ GERANIUM
★ 220-63
225-63
- ▲ CARDINAL RED
★ 220-53
225-53
- ▲ CRANBERRY
220-283
- ▲ BURGUNDY
★ 220-58
225-58
- ▲ DARK BURGUNDY
★ 220-68
- ▲ DARK VIOLET
220-98
- ▲ PLUM
220-78
PANTONE 525C
- ▲ ROYAL PURPLE
★ 220-38
- ▲ PURPLE
220-48
- ▲ ROYAL BLUE
★ 220-87

Product	Cast Vinyl 220/225 Series	220 Metallic	220/225 Clear	ImageCast™	Easy Apply
Thickness	2 mil	2 mil	2 mil	2.5 mil	2 mil
Exterior Life	8 years	5 years	5 years	5 years	7 years

GERBER - CAST VINYL MATERIALS

GERBER - SPECIALTY MATERIALS & INTERMEDIATES

GERBER - GERBERCOLOR™ FOLLS

	▲ NAVY ★ 220-27 PANTONE 2767C
	▲ LIGHT NAVY ★ 220-197 PANTONE 289C
	▲ BOAT BLUE 220-127
	▲ DARK BLUE ★ 220-397
	▲ SHADOW BLUE 220-177
	▲ WEDGEWOOD BLUE 220-187
	▲ SAPPHIRE BLUE ★ 220-37 ★ 225-37 PANTONE 2747C
	▲ VIVID BLUE ★ 220-17 ★ 225-17
	▲ MATTE BLUE 220-407
	▲ INTENSE BLUE ★ 220-47 ★ 225-47 PANTONE 301C
	▲ PERIWINKLE ★ 220-387
	▲ PERSIAN BLUE 220-117
	▲ OLYMPIC BLUE ★ 220-57 PANTONE 7461C
	▲ LIGHT BLUE 220-107
	▲ SOFT BLUE 220-97
	▲ PEACOCK BLUE 220-77 PANTONE 298C
	▲ ROBIN EGG BLUE 220-86

	▲ POWDER BLUE 220-347
	▲ DARK AQUA 220-307
	▲ TEAL ★ 220-96 PANTONE 322C
	▲ BERMUDA BLUE ★ 220-357 PANTONE 323C
	▲ LIME GREEN 220-136
	▲ APPLE GREEN ★ 220-196
	▲ KELLY GREEN ★ 220-46
	▲ BRIGHT GREEN ★ 220 186 PANTONE 348C
	▲ CACTUS GREEN ★ 220-266
	▲ DARK GREEN ★ 220-56 ★ 225-56 PANTONE 3425C
	▲ KHAKI GREEN 220-16
	▲ FOREST GREEN ★ 220-66 ★ 225-66 PANTONE 3302C
	▲ BOTTLE GREEN ★ 220-276
Metallics	
	▲ DARK BLUE ★ 220- 217
	▲ BRIGHT BLUE 220- 227
	▲ PETROLEUM BLUE 220- 247

	▲ CHARCOAL 220- 211
	▲ SLATE 220- 201
	▲ STEAMPUNK RED 220- 243
	▲ BURGUNDY 220- 208
	▲ DARK BROWN 220- 209
	▲ COPPER ★ 220- 229
	▲ CHAMPAGNE 220- 249
	▲ LIGHT GOLD 220- 231
	▲ GOLD ★ 220-131 ★ 225-131 PANTONE 872C
	▲ SILVER ★ 220-120 ★ 225-120 PANTONE 877C
	Clear
	▲ CLEAR ENAMEL ★ RECEPTIVE 220-114 ★ 225-114
	● IMAGECAST
	● Easy Apply
	Repositionable

Available Widths

● 15" Punched

▲ 15"/30" Punched

★ 24"/48" Unpunched

Liner

220 - 78 Pound Kraft Paper

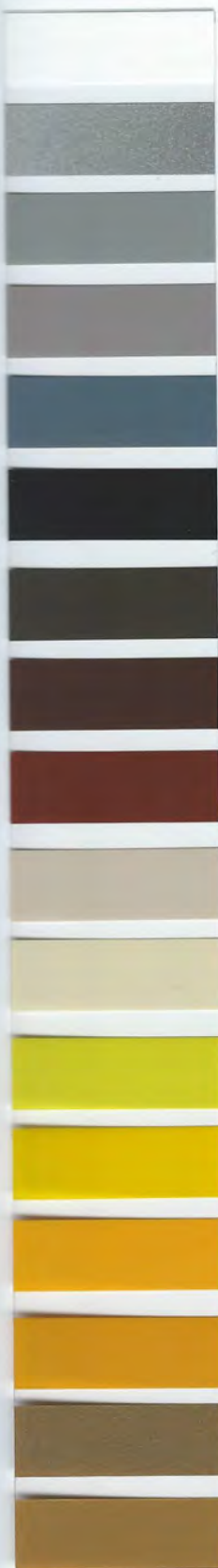
225 - Transparent Synthetic

Terms and
All statements
believe to be
is made in the
to replace each
table for any
use the product
user's manual



© 2019 Gen
For the work
Consult your
PANTONE and
Company Use
License Agree

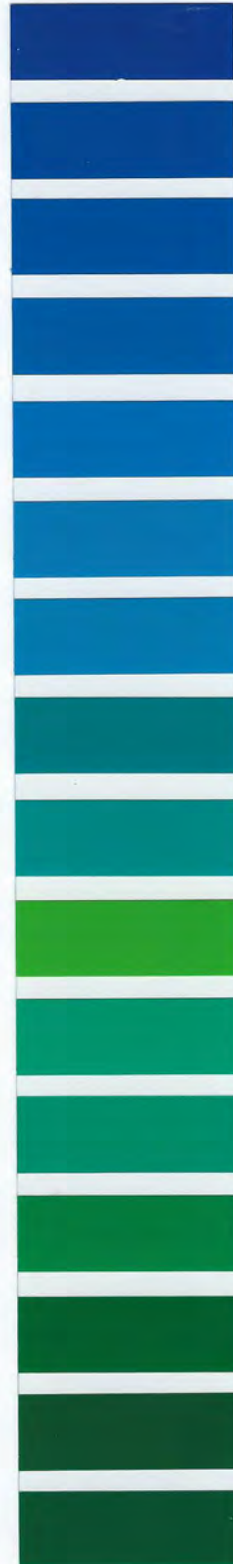
TRANSLUCENT 230 MANUFACTURED BY 3M



- ▲ **WHITE**
230-20
- ▲ **SILVER**
230-121
PANTONE 877C
- ▲ **SILVER GREY**
230-51
- ▲ **SHADOW GREY**
230-71
PANTONE WARM GREY 7
- ▲ **SLATE GREY**
230-61
- ▲ **BLACK**
230-22
(OPAQUE)
PANTONE BLACK C
- ▲ **DURANODIC**
230-69
(OPAQUE)
PANTONE BLACK 7C
- ▲ **DARK BROWN**
230-59
- ▲ **RUST BROWN**
230-63
PANTONE 7610C
- ▲ **LIGHT BEIGE**
230-149
- ▲ **IVORY**
230-005
PANTONE 7500C
- ▲ **LEMON YELLOW**
230-115
- ▲ **YELLOW**
230-015
PANTONE 116C
- ▲ **MANGO**
230-125
PANTONE 1235C
- ▲ **SUNFLOWER**
230-25
PANTONE 130C
- ▲ **METALLIC GOLD**
230-131
PANTONE 872C
- ▲ **GOLD NUGGET**
230-141



- ▲ **KUMQUAT**
230-74
PANTONE 151C
- ▲ **TANGERINE**
230-84
PANTONE 1575C
- ▲ **ORANGE**
230-44
- ▲ **POPPY RED**
230-143
PANTONE 485C
- ▲ **LT. TOMATO RED**
230-43
- ▲ **RED**
230-33
PANTONE 1797C
- ▲ **SCARLET RED**
230-83
- ▲ **DARK RED**
230-73
PANTONE 7621C
- ▲ **CARDINAL**
230-53
PANTONE 187C
- ▲ **BURGUNDY**
230-49
- ▲ **RASPBERRY**
230-133
PANTONE 220C
- ▲ **VIVID ROSE**
230-78
PANTONE 206C
- ▲ **PINK LAVENDER**
230-108
PANTONE 224C
- ▲ **MULBERRY**
230-118
PANTONE 241C
- ▲ **PLUM PURPLE**
230-128
PANTONE 525C
- ▲ **ROYAL BLUE**
230-87
PANTONE 2745C
- ▲ **DARK BLUE**
230-36
PANTONE 281C



- ▲ **COBALT BLUE**
230-157
PANTONE 287C
- ▲ **DELFT BLUE**
230-97
- ▲ **BLUE**
230-167
PANTONE 2945C
- ▲ **INTENSE BLUE**
230-127
PANTONE 300C
- ▲ **PROCESS BLUE**
230-337
- ▲ **DEEP SKY BLUE**
230-147
PANTONE 7690C
- ▲ **OLYMPIC BLUE**
230-57
- ▲ **TEAL**
230-246
PANTONE 321C
- ▲ **TURQUOISE**
230-236
PANTONE 3282C
- ▲ **APPLE GREEN**
230-106
PANTONE 368C
- ▲ **KELLY GREEN**
230-146
PANTONE 340C
- ▲ **BRIGHT JADE GREEN**
230-116
- ▲ **VIVID GREEN**
230-156
- ▲ **GREEN**
230-26
PANTONE 7727C
- ▲ **HOLLY GREEN**
230-76
PANTONE 7734C
- ▲ **EMERALD GREEN**
230-126
PANTONE 3425C

Product	230 Translucent
Thickness	2 mil
Exterior Life	6 years

Liner
230 - Transparent Synthetic

Available Widths
▲ 15"/30" Punched

GERBER SPECIALTY MATERIALS

280/280i PLUS REFLECTIVE



HOLOGRAPHIX™



LUMINOUS



Available Widths

■ 13" Unpunched

● 15" Punched

▲ 15"/30" Punched

◆ 20"/45" Unpunched

★ 24"/48" Unpunched

Product	Reflective	HoloGraphix	210 Fluorescent	210 Crystals	Metallized Polyester
Thickness	7.5 mil	3.7 mil	2 mil	3 mil	2 mil
Exterior Life	7 years	Interior only	1 year	3 years	2 years

Product	Gerber Luminous	GerberGlow	Label Stock
Thickness	9 mil	2.5 mil	1 and 2 mil
Exterior Life	1 year	Interior only	2 years

SPECIALTY APPLICATIONS

- **PERMAGRIP VINYL**
Durable, permanent film
- **GERBERVISION™ II**
Window film
- **STATIC CLING CLEAR**
- **STATIC CLING WHITE**
- **INSTACHANGE™**
White, removable vinyl
- **GERBERMAG™ II**
Flexible
19 mil
For promotional magnets

Sample available upon request

- **AUTOMAG™ II**
Vehicle-strength
24 mil
Magnetic material

OVERLAMINATES

- **GERBER GUARD™**
- **UVGUARD™**
- **UVGUARD 9**
- **STRIKEGUARD™**
- **CARBON FIBER**
- **STARRY NIGHT**

SEMI-RIGID

Custom formulated for use with GERBER EDGE Series printers.

- **LEXEDGE™ II**
10 mil Lexan™, custom-formulated print surface. Also available in 5 mil.
- **LEXEDGE FR65**
10 mil flexible Lexan based polycarbonate, meets stringent UL94 V-0 flame-retardant specifications.
- **LEXEDGE CLEAR**
Clear, polished
10 mil Lexan.
- **LEXEDGE OUTDOOR**
Outdoor durable, matte,
10 mil Lexan.
- **PVC-10**
White, 10 mil, PVC material, custom formulated.

OTHER MATERIALS

- **EDGE POSITIVE™**
Crystal clear
7 mil
For screen printing
- ▲ **DRAWING AND POUNCING PAPER**
- ▲ **SANDBLAST 1532**
Rubber masking stencil for sandblasting glass, stone & wood
- **SANDBLAST 519YP**
Double-liner rubber masking stencil
- ▲ **APPLICATION TAPE**
Various widths
- ▲ **LAMINATING ADHESIVE (467MP, 468MP)**
12" width
- **HEAT TRANSFER**
- **NON-TRANSFER VOID**

INTERMEDIATES

IMAGECAL™

- **IMAGECAL™ "P"**
- **IMAGECAL™ "R" WHITE**
- **IMAGECAL™ "R" CLEAR**
- ▲ **WHITE**
- ▲ **MATTE WHITE**
- ▲ **BLACK**
- ▲ **YELLOW**
- ▲ **RED**

Product	PermaGrip	GerberVision II	Static Cling	InstaChange
Thickness	2 mil	4 mil	7 mil	4.6 mil
Exterior Life	7 years	1 year	Interior only	2 years

Product	Quantum II	ImageCal "P"	ImageCal "R" White	ImageCal "R" Clear	Heat Transfer
Thickness	3.0 mil	4 mil	4 mil	3.5 mil	5 mil
Exterior Life	5 years	2 years	1 years	6 months	-

Product	Gerber Guard	UVGuard	UVGuard 9	StrikeGuard	Carbon Fiber	Starry Night
Thickness	3 mil	1 mil	2 mil	8 mil	3.5 mil	2 mil
Exterior Life	5 years	5 years	9 years	2 years	-	-

GERBERCOLOR FOILS

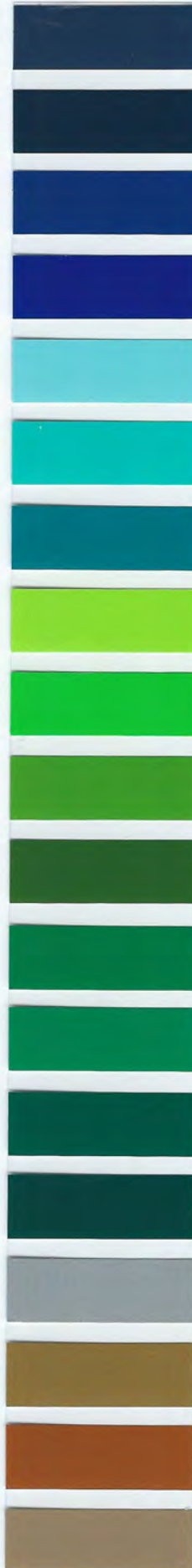
GERBERCOLOR SPOT (GCS)



- ARCTIC WHITE**
GCS-710
■ 45 m ■ 45 m
- WHITE**
GCS-10
■ 45/75 m ■ 45 m
- BLACK**
GCS-12
■ 45/75 m ■ 45/91 m
- LIGHT GREY**
GCS-681
■ 45 m ■ 45 m
- GREY**
GCS-31
■ 45 m ■ 45 m
- TRAFFIC GREY**
GCS-151
■ 45 m ■ 15 m
- DARK GREY**
GCS-641
■ 45 m ■ 45 m
- BROWN**
GCS-19
■ 45 m ■ 45 m
- TAN**
GCS-39
■ 45 m ■ 15 m
- BEIGE**
GCS-49
■ 45 m ■ 45 m
- LEMON YELLOW**
GCS-155
■ 45 m ■ 45 m
- YELLOW**
GCS-15
■ 45 m ■ 45/91 m
- SUNFLOWER YELLOW**
GCS-625
■ 45 m ■ 45 m
- VEGAS GOLD**
GCS-145
■ 45 m ■ 45 m
- IMITATION GOLD**
GCS-105
■ 45 m ■ 15/45 m
- KUMQUAT**
GCS-74
■ 45 m ■ 45 m
- ORANGE**
GCS-14
■ 45 m ■ 45/91 m
- TERRA COTTA**
GCS-24
■ 45 m ■ 15 m



- PINK**
GCS-643
■ 45 m ■ 15 m
- INTENSE RED**
GCS-663
■ 45 m ■ 45/91 m
- ATOMIC RED**
GCS-293
■ 45 m ■ 15/45 m
- FIREBALL RED**
GCS-493
■ 45 m ■ 45 m
- TOMATO RED**
GCS-13
■ 45 m ■ 45/91 m
- RUBY RED**
GCS-53
■ 45 m ■ 45/91 m
- BRICK RED**
GCS-603
■ 45 m ■ 15 m
- DARK CARDINAL**
GCS-353
■ 45 m ■ 45 m
- BURGUNDY**
GCS-58
■ 45 m ■ 45 m
- RASPBERRY**
GCS-133
■ 45 m ■ 15 m
- LIGHT PURPLE**
GCS-668
■ 45 m ■ 45 m
- VIOLET PURPLE**
GCS-628
■ 45 m ■ 15/45 m
- PURPLE**
GCS-38
■ 45 m ■ 45 m
- PEACOCK BLUE**
GCS-77
■ 45 m ■ 45 m
- UNIVERSITY BLUE**
GCS-267
■ 45 m ■ 45 m
- OLYMPIC BLUE**
GCS-57
■ 45 m ■ 45/91 m
- INTENSE BLUE**
GCS-47
■ 45 m ■ 45/91 m
- VIVID BLUE**
GCS-17
■ 45 m ■ 15 m
- DEEP SEA BLUE**
GCS-515
■ 45 m ■ 45 m



- LIGHT NAVY**
GCS-697
■ 45 m ■ 15/45 m
- NAVY**
GCS-627
■ 45 m ■ 45/91 m
- COBALT BLUE**
GCS-37
■ 45 m ■ 45/91 m
- ROYAL REFLEX**
GCS-687
■ 45 m ■ 45 m
- SEAFOAM**
GCS-386
■ 45 m ■ 45 m
- AQUA**
GCS-176
■ 45 m ■ 15 m
- TEAL**
GCS-96
■ 45 m ■ 45 m
- LIME GREEN**
GCS-616
■ 45 m ■ 15/45 m
- ELECTRIC GREEN**
GCS-406
■ 45 m ■ 45 m
- APPLE GREEN**
GCS-196
■ 45 m ■ 45 m
- FERN GREEN**
GCS-286
■ 45 m ■ 45 m
- GREEN**
GCS-186
■ 45 m ■ 45/91 m
- KELLY GREEN**
GCS-46
■ 45 m ■ 45 m
- DARK GREEN**
GCS-56
■ 45 m ■ 45 m
- FOREST GREEN**
GCS-66
■ 45 m ■ 45 m
- SILVER**
GCS-620
■ 45 m ■ 45 m
- GOLD**
GCS-631
■ 45 m ■ 45 m
- COPPER**
GCS-629
■ 45 m ■ 15 m
- CHAMPAGNE GOLD**
GCS-601
■ 45 m ■ 15 m




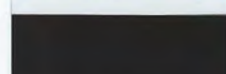
GERBERCOLOR MEDAL (GCM)

	SILVER MEDAL II GCM-721 ■ 25 m ■ 25 m
	GOLD MEDAL GCM-731 ■ 25 m ■ 15 m
	RED MEDAL* GCM-783 ■ 25 m
	BLUE MEDAL* GCM-747 ■ 25 m

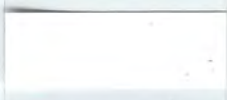







GERBERCOLOR TRANSPARENT (GCT)

	YELLOW GCT-625 ■ 45 m ■ 45 m
	ORANGE GCT-614 ■ 45 m ■ 45 m
	RED GCT-643 ■ 45 m ■ 45 m
	TOMATO RED GCT-13 ■ 45 m ■ 45 m
	BURGUNDY GCT-49 ■ 45 m ■ 45 m
	PLUM PURPLE GCT-128 ■ 45 m ■ 45 m
	SAPPHIRE BLUE GCT-37 ■ 45 m ■ 45 m
	BLUE GCT-617 ■ 45 m ■ 45 m
	GREEN GCT-116 ■ 45 m ■ 45 m
	BROWN GCT-629 ■ 45 m ■ 45 m
	GOLD GCT-105 ■ 45 m ■ 45 m
	WHITE GCT-30 ■ 45 m ■ 45 m
	GREY GCT-111 ■ 45 m ■ 45 m

GERBERCOLOR PROCESS PRO™ (GSP)

	PROCESS YELLOW GCP-805 ■ 45 m ■ 45/91 m
	PROCESS MAGENTA GCP-873 ■ 45 m ■ 45/91 m
	PROCESS CYAN GCP-807 ■ 45 m ■ 45/91 m
	PROCESS BLACK GCP-812 ■ 45 m ■ 45/91 m

GERBERCOLOR SPECIAL EFFECTS (GCX)

	FLOOD COAT WHITE GCX-10 ■ 45 m ■ 45 m
	JET BLACK GCX-12 ■ 45 m ■ 45 m
	FLUORESCENT RED ORANGE GCX-414 ■ 25 m ■ 45 m
	FLUORESCENT GREEN GCX-416 ■ 25 m ■ 45 m
	FLUORESCENT YELLOW GCX-415 ■ 25 m ■ 45 m
	SPECTRATINT™ GCX-30 ■ 45 m ■ 45 m
	SPECTRASHADE™ GCX-111 ■ 45 m ■ 45 m
	METAL FLAKE GCX-715 ■ 45 m ■ 45 m

GERBER COLORSET™ (GSP/GSS)

	PROCESS YELLOW* CSP-605 ■ 50 m
	PROCESS MAGENTA* CSP-273 ■ 50 m
	PROCESS CYAN* CSP-607 ■ 50 m
	PROCESS BLACK* CSP-12 ■ 50 m
	COBALT BLUE* CSS-37 ■ 45 m
	WARM RED* CSS-253 ■ 45 m
	BLACK* CSS-12 ■ 45 m

GERBERCOLOR FINISHING (GCF)

	ABRASION GUARD™ SPF GCF-214 ■ 75 m ■ 91 m
--	--

*Available for EDGE® and EDGE 2 only.

■ EDGE/EDGE 2 – Length in meters.

■ EDGE FX – Length in meters.

GERBERCOLOR SPECTRATONE™



Vivid reds! Cool blues! Soft pastels and sparkling metallics! Create more than 3,000 spot colors with GerberColor Spot, Process, and Transparent Series Foils. All Spectratone colors are 100% solid fills. NO gradient textures. NO halftone dots.

GerberColor Foils and EDGE READY materials are specially formulated for the GERBER EDGE series of thermal transfer printers. Print outdoor-durable spot, metallic, and process color to self-adhesive, magnet, holographic, reflective materials, and more.

GERBER MATERIAL & FOIL APPLICATIONS



CAST VINYL



TRANSLUCENT



REFLECTIVE



REMOVABLE



HOLOGRAPHIX



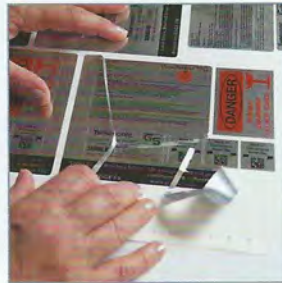
FLUORESCENT



WINDOW



METAL FLAKE FOIL



LABEL STOCK



**SEMI-RIGID
FAA COMPLIANT**

Your Authorized Gerber Distributor:

Gerber Quality & Service

- Offering the finest products in the industry – including custom formulated cast vinyl manufactured by 3M.
- Headquartered in the USA.
- USA customer service at 1-800-222-7446.
- Same day shipping.
- Nationwide network of well-stocked distributors.
- Expert application support.
- Trusted Gerber quality for over 35 years!

Terms and Conditions of Sale

All statements, technical information, and recommendations contained herein are based on tests we believe to be reliable, but the accuracy or completeness thereof is not guaranteed, and the following is made in lieu of all warranties, express or implied. Seller's and manufacturer's only obligation shall be to replace such quantity of the product proved to be defective. Neither seller nor manufacturer shall be liable for any injury, loss or damage, direct or consequential, arising out of the use of or the inability to use the product. Before using, user shall determine the suitability of the product for its intended use, and user assumes all risk and liability whatsoever in connection therewith. Statements or recommendations

not contained herein shall have no force or effect unless, in agreement, signed by officers of seller and manufacturer. When processed in accordance with the procedures in current 3M Product and Instruction Bulletins, performance as indicated may be expected. Performance statements are based upon representative experience obtained from testing throughout the United States; however, actual performance will be determined by substrate selection and preparation, maintenance of the marking, and exposure conditions. Not intended for use where markings may be subject to petrochemical spillage. **Detailed product bulletins are available at www.gerbertechnology.com/sign-graphics.**



Gerber Technology
24 Industrial Park Road West
Tolland, CT 06084 USA

860-644-1551 / 800-222-7446
gerbertechnology.com/sign-graphics

© 2019 Gerber Technology LLC

For film samples of these products, contact your Gerber representative or distributor. This product is a simulation of the closest PANTONE -identified color standard. Consult current PANTONE for accurate color. All trademarks noted herein are either the property of Gerber Technology LLC, Pantone LLC, 3M, SABIC, or Dupont. PANTONE and other Pantone trademarks are the property of Pantone LLC. © Pantone LLC, 2016. All rights reserved. 3M, Controltac, and Comply are trademarks of 3M Company. Lexan is a trademark of SABIC Innovation Plastics. Tedlar is a registered trademark of E. I. du Pont de Nemours and Company or its affiliates. Produced under License Agreement between Pantone, Inc. and Gerber Technology.

P84987A

GERBER MATERIAL DESCRIPTIONS

Gerber 220/225 Cast Vinyl manufactured by 3M

High performance film formulated to adhere to uneven surfaces and perform for up to 8 years. Clear, pressure-sensitive adhesive allows for attractive two-way markings. Easy to cut, weed and apply. 220 has 78 lb. paper liner; 225 has transparent synthetic liner.

Gerber 220 Easy Apply manufactured by 3M

High performance, versatile cast vinyl with a repositionable, pressure-activated adhesive that allows air to escape through micro-channels without leaving channel marks on the film surface. Faster and easier to apply than conventional films.

Gerber ImageCast manufactured by 3M

Durable, clear cast vinyl, custom formulated for use with GERBER EDGE printers.

Gerber Translucent 230 Cast Vinyl manufactured by 3M

A durable and dimensionally stable translucent film with a clear, pressure-sensitive adhesive. Features uniform color with a matte finish to eliminate glare.

Gerber 280 & 280i Plus Reflective manufactured by 3M

Reflective films designed for high visibility, day and night. Optimized for EDGE printing. Removable with heat.

Gerber Label Stock

UL recognized polyester-based films that resist tearing, abrasion, and heat. Chemically-resistant to mild acids, motor oil, and cleaning agents. Available in clear, white, brushed silver, brushed gold, matte silver, and shiny silver.

Gerber PermaGrip Label Stock

UL recognized polyester material has an aggressive adhesive. Specially designed for low surface energy (LSE) surfaces. Withstands a range of -40°F to 302°F.

Gerber Security Label Stock

Designed for identification markings needing tamper-evident protection. The word VOID appears if the label is removed. Available in white and chrome.

Gerber Static Cling

Vinyl film designed to adhere to glass without adhesive. Available in white or clear. Can be printed or decorated with vinyl graphics.

Gerber InstaChange manufactured by 3M

White vinyl film that is removable for up to two years with no adhesive residue. Grey pigmented adhesive allows maximum opacity.

Magnetic

Gerber AutoMag II is a flexible, 24 mil material with 18 magnetic poles per inch for vehicle-strength removable graphics. GerberMag II is a flexible, 19 mil material with 12 magnetic poles per inch. Perfect for ad/promotional applications.

Gerber HoloGraphix

Holographic material, available in four patterns that include mirror and prismatic finishes. Each pattern creates a spectrum of color for dynamic visual effects.

Gerber 210 Fluorescent manufactured by 3M

Vibrant fluorescent films provide high visibility under normal or low light.

Gerber 210 Crystal manufactured by 3M

210 Dusted and Frosted Crystal films resemble acid-etched glass and sand-blasted glass. They have a clear adhesive and are perfect for windows, glass, mirror and clear plastic applications. For cut graphic applications.

Gerber Metallized Polyester

These polyester-based films have a mirror look on both sides for two-sided interior and limited exterior use. Available in Brushed Silver/Aluminum and Shiny Silver.

Gerber Heat Transfer Film

A thin, thermally-printable, white, opaque flex material. Can be contour cut into small shapes and offers excellent image quality and washability on a wide variety of fabrics – not just standard substrates such as cotton and polyester, but also substrates that would otherwise be more difficult to bond to, such as nylon and other polyamides.

Glow-in-the-Dark

Gerber Luminous Film manufactured by 3M glows for up to 6 hour and takes only 3 minutes to recharge. Meets maritime, fire protection, and railroad standards and requirements. GerberGlow, a novelty grade glow-in-the-dark film, has a 1 hour charge time that provides a bright glow for 30 minutes.

Gerber PermaGrip manufactured by 3M

A durable, permanent cast vinyl with an aggressive, pigmented adhesive that provides superior hiding power on colored surfaces. Best for flat, moderately-compound curved and rough surfaces, and some low surface energy materials.

GerberVision II manufactured by 3M

Perforated window film suitable for all types of clear substrate displays. The clear adhesive system allows for easy removal and replacement.

Gerber LexEdge Series Semi-Rigid Films

Lexan™-based films with a smooth printable surface and a non-printable display surface. Ideal for reverse printed, subsurface graphics. LexEdge II has a clear, velvet finish in 5 or 10 mil. LexEdge Clear has a polished finish, LexEdge Outdoor offers an outdoor-durable, clear matte finish, and LexEdge FR65 with velvet finish, meets stringent UL94 V-0 flame-retardant specifications and is compliant with FAA regulations.

Gerber PVC-10 Shelf & Tag

Semi-rigid PVC material, ideal for menu boards, POP displays, ID tags, and door hangers.

GERBER EDGE Positive

Clear, top-coated polyester film, formulated for GERBER EDGE printing to produce screen printing film positives.

GerberMask Series

GerberMask Ultra white vinyl stencil mask with low-tack removable adhesive features a moisture resistant liner that resists curling and expansion. GerberMask Ultra II features an aggressive, removable acrylic adhesive for hand and spray painting, light sandblasting, or acid etching. GerberMask Yellow Ultra is yellow vinyl with low-tack removable adhesive that offers high-contrast visibility and withstands short bake cycles up to 200°F.

Gerber Sandblast

Rubber masking stencil for sandblasting glass, stone, treated and untreated wood. Sandblast 1532 single-liner stencil has a low-friction coating. Sandblast 519YP double-liner stencil features a yellow translucent polyester inner liner for better visibility.

Gerber QUANTUM II

Calendered polymeric film that is perfect for interior and exterior graphics requiring up to 5-year durability. Semi-gloss and matte colors available. Permanent acrylic adhesive.

Gerber ImageCal "P"

A clear, calendered vinyl film with a permanent adhesive system designed for creating decals and labels with GERBER EDGE printers.

Gerber ImageCal "R"

ImageCal "R" Clear is a durable calendered vinyl. Removable for up to 6 months after application. ImageCal "R" White is a removable calendered vinyl that can be reused up to 5 times within one year.

Overlaminates

Gerber Guard manufactured by 3M is a glossy 3 mil overlaminate designed to provide protection from petrochemicals and abrasion resistance from severe handling conditions. Gerber UVGuard is a 1 mil clear TEDLAR® overlaminate that protects the life of graphics from weathering for up to 5 years. Gerber UVGuard 9 manufactured by 3M is a 2 mil glossy polyvinyl fluoride laminating film designed to further expand the resistance to weathering for printed or cut graphics on Gerber films. Offers the highest protection from UV fade. Gerber StrikeGuard provides an extra-thick, 8 mil flexible, clear overlaminate designed to provide EDGE- printed graphics with extreme protection from forceful impact. Gerber Carbon Fiber is a 2 mil special effects overlaminate that provides a carbon fiber appearance to the underlying film/graphic. Gerber Starry Night is a 3.5 mil special effects overlaminate that enhances the underlying film/graphic by adding an intense silver sparkle.

SPEC GUIDE

	Product Name	Description	Thickness (mil)	Adhesive	Outdoor Life (yrs)	Format Width (Inches)
Cast Vinyl	Gerber 220/225	High performance; durable; easy to use	2	Permanent	8	15/24/30/48
	220 Metallics	Stunning effects in 13 colors	2	Permanent	5	15/24/30/48
	Gerber 220 Easy Apply	Repositionable; pigmented adhesive; micro air channels	2	Repositionable	7	15
	ImageCast	Clear cast vinyl	2.5	Permanent	5	15
Translucent	230 Translucent	Translucent with synthetic liner	2	Permanent	5	15/30
Reflective	280 Reflective	High visibility, day and night	7.5	Permanent	7	15/30
	280i Plus Reflective	Printable white reflective	7.5	Permanent	7	15
Label Stock	Label Stock	Polyester-based film	1 & 2	Permanent	2	15
	PermaGrip Label Stock	For low surface energy (LSE) surfaces	2	Aggressive	2	15
	Security Label Stock	VOID appears if label is removed	2	Security	2	15
Removable	Static Cling	Clear & White; adheres to glass	7	None	Interior	15
	InstaChange	Removable vinyl	4.6	Removable	2	15
	GerberMag II	Promotional magnets	19	Magnetic	5	15
	AutoMag II	Vehicle-strength magnets	24	Magnetic	5	15
Specialty	HoloGraphix	Holographic film in 4 patterns	3.7	Permanent	Interior	15
	210 Fluorescent	5 vibrant colors	2	Permanent	1	15
	210 Crystals	Dusted and Frosted etched glass looks	3	Permanent	3	15/24/30/48
	Metallized Polyester	Polyester film with mirror look	2	Permanent	2	15
	GerberGlow	Promotional glow-in-the-dark	2.5	Permanent	Interior	15
	Gerber Luminous	Industrial performance glow-in-the-dark	9	Permanent	1	15
	PermaGrip Cast Vinyl	Aggressive, pigmented adhesive	2	Aggressive	7	15
	GerberVision II	Perforated window film	4	Removable	1	15
	Heat Transfer	Textile graphic film	5	Thermally activated	N/A	15
Semi-Rigid	LexEdge II	Velvet finish Lexan polycarbonate	5 & 10	None	Interior	15
	LexEdge FR65	Flame-retardant Lexan polycarbonate	10	None	Interior	15
	LexEdge Clear	Clear polished Lexan polycarbonate	10	None	Interior	15
	LexEdge Outdoor	Clear Lexan film with extra durability	10	None	5	15
	PVC-10 Shelf & Tag	Semi-rigid PVC material	10	None	1	15
	EDGE Positive	Screen print film positive	7	None	Interior	15
Paint Mask	GerberMask Ultra	Stencil masking film	4	Low Tack	N/A	15/20/30/45
	GerberMask Ultra II	Light sandblasting; paint or acid etching	4	Aggressive	N/A	15/20/30/45
	GerberMask Yellow Ultra	High-contrast stencil on white surfaces	4	Low Tack	N/A	15/30/48
Stencil	Sandblast 1532	Single-liner sandblast stencil	37	Rubber Based	N/A	15/30
	Sandblast 519YP	Double-liner sandblast stencil	47	Rubber Based	N/A	15
Intermediate	QUANTUM II	Polymeric calendered film	3.0	Permanent	5	15/30
	ImageCal "P"	Clear calendered film	4	Permanent	2	15
	ImageCal "R" Clear	Clear; removable up to 6 months	3.5	Removable	0.5	15
	ImageCal "R" White	Removable & reusable 5 times in 1 year	4	Removable	1	15
Overlamine	Gerber Guard	Glossy overlamine	3	Permanent	5	15
	UVGuard	Improves life of graphics up to 5 years	1	Permanent	5	15
	UVGuard 9	Highest protection from UV fade	1	Permanent	9	15
	StrikeGuard	Protects from forceful impact	8	Permanent	2	13
	Starry Night	Special effects	2	Permanent	—	13
	Carbon Fiber	Special effects	3.5	Permanent	—	13

APPLICATIONS

Exterior Signage	Labels & Decals	Vehicle Graphics	P.O.P Displays	Placards & Overlays	Window Graphics	Banner	OEM	Safety	Back Lit	Awnings	Product Name
●	●	●	●	●	●	●	●	●		●	Gerber 220/225
●	●	●	●		●	●	●			●	220 Metallics
●	●	●	●			●	●				Gerber 220 Easy Apply
●	●	●	●		●		●				ImageCast
									●	●	230 Translucent
●	●	●	●		●	●	●	●		●	280 Reflective
●	●	●	●		●	●	●	●		●	280i Plus Reflective
	●		●	●			●				Label Stock
	●						●				PermaGrip Label Stock
	●						●				Security Label Stock
		●	●		●						Static Cling
●	●	●	●		●						InstaChange
			●								GerberMag II
●		●	●								AutoMag II
	●		●								HoloGraphix
●	●	●	●		●	●		●			210 Fluorescent
					●						210 Crystals
	●		●								Metallized Polyester
	●										GerberGlow
	●			●			●	●			Gerber Luminous
●	●	●	●				●				PermaGrip Cast Vinyl
		●	●		●						GerberVision II
											Heat Transfer
	●			●			●		●		LexEdge II
	●			●			●		●		LexEdge FR65
	●			●			●		●		LexEdge Clear
●	●			●			●		●		LexEdge Outdoor
	●		●						●		PVC-10 Shelf & Tag
											EDGE Positive
											GerberMask Ultra
											GerberMask Ultra II
											GerberMask Yellow Ultra
											Sandblast 1532
											Sandblast 519YP
●	●	●	●		●	●	●				QUANTUM II
●	●	●	●		●				●		ImageCal "P"
●	●	●	●		●				●		ImageCal "R" Clear
●	●	●	●		●						ImageCal "R" White
											Gerber Guard
											UVGuard
											UVGuard 9
											StrikeGuard
											Starry Night
											Carbon Fiber

– Screen printing in conjunction with thermal transfer printing –

– Masking & Stencil applications –

– Masking & Stencil applications –

– Overlaminates –

GERBERCOLOR FOILS

GerberColor Spot Series (GCS)

GCS foils offer a wide range of smooth, consistent pigments that match popular vinyl films, inks, and paints. Ideal for interior or exterior applications, they can be used in conjunction with process and transparent foils, or overprinted to create custom colors, patterns, gradients, and shade effects. This cost-effective alternative for 1-, 2-, or 3-color jobs offers color matches not achieved with 4-color process.

GerberColor Process Pro Series (GCP)

This series has been designed to produce durable, process color GERBER EDGE prints with expanded print definition.

GerberColor Transparent Series (GCT)

These outdoor-durable, transparent foils allow the base material's characteristics to show through and be enhanced – reflectives reflect, metallics sparkle, chrome finishes shine brightly, and transluents colorfully light up. GCT foils can also be used on opaque films for traditional spot color applications.

GerberColor Medal Series (GCM)

Add an elegant, polished, metallized finish to signs, labels, and decals. Not recommended for outdoor use or with Gerber Static Cling, LexEdge II, or Gerber reflective films. First-surface application only (foil is not reversible). Gerber does not recommend printing halftones with this product.

GerberColor Special Effects Series (GCX)

This line of exciting special effects colors adds impact to signs, labels, and decals. Fluorescents are recommended for indoor use only.

Gerber ColorSet Series (GSP/CSS)

ColorSet foils are designed for promotional, short-term interior or exterior signs, banner graphics, or novelty items lasting up to three years.

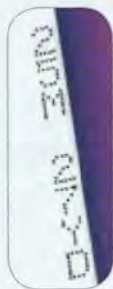
GerberColor Finishing Series (GCF)

Abrasion Guard SPF is a clear, semi-gloss, overprint foil that adds protection against moderate handling conditions and UV protection.

*For increased protection from the effects of chemicals, abrasion or UV, refer to the Gerber Guard/Gerber UVGuard overlaminates product bulletins.

GerberGauge™

Estimating the remaining length on GerberColor foils has never been easier. GerberGauge, a patented length remaining marking system, is imprinted directly along the edge of the GerberColor foil. The markings are displayed as whole numbers – in both meters and yards – and appear approximately every 4 inches (10 cm) over the length of the foil to indicate the minimum amount of foil remaining in the cartridge.



These durability results are based on accelerated weathering tests we believe to be reliable. A significant decrease in performance life of printed graphics may be experienced when graphics have been applied to surfaces which are other than vertical, or when exposed to harsh outdoor conditions, pollutants, chemicals, abrasive contact, or frequent washings. Climatic variations will yield varying results.

GerberColor Spot (GCS)

GerberColor Process Pro (GCP)

GerberColor Transparent (GCT)

GerberColor Special Effects (GCX)

GerberColor Gerber ColorSet (CSP/CSS)

GerberColor Medal (GCM)

Color	Color Code	Exterior Life (Years)	EDGE/EDGE 2 Length in Meters			EDGE FX Length in Meters		
			25	45	75	15	45	91
APPLE GREEN	GCS-196	3		●			●	
AQUA	GCS-176	4		●			●	
ARCTIC WHITE	GCS-710	3		●			●	
ATOMIC RED	GCS-293	3		●			●	
BEIGE	GCS-49	4		●			●	
BLACK	GCS-12	5		●	●		●	●
BRICK RED	GCS-603	3		●			●	
BROWN	GCS-19	4		●			●	
BURGUNDY	GCS-58	4		●			●	
CHAMPAGNE GOLD	GCS-601	3		●			●	
COBALT BLUE	GCS-37	4		●			●	
COPPER	GCS-629	3		●			●	
DARK CARDINAL	GCS-353	3		●			●	
DARK GREEN	GCS-56	3		●			●	
DARK GREY	GCS-641	3		●			●	
DEEP SEA BLUE	GCS-515	3		●			●	
ELECTRIC GREEN	GCS-406	3		●			●	
FERN GREEN	GCS-286	3		●			●	
FIREBALL RED	GCS-493	3		●			●	
FOREST GREEN	GCS-66	4		●			●	
GOLD	GCS-631	3		●			●	
GREEN	GCS-186	3		●			●	●
GREY	GCS-31	5		●			●	
IMITATION GOLD	GCS-105	3		●			●	
INTENSE BLUE	GCS-47	4		●			●	
INTENSE RED	GCS-663	3		●			●	●
KELLY GREEN	GCS-46	3		●			●	
KUMQUAT	GCS-74	4		●			●	
LEMON YELLOW	GCS-155	3		●			●	
LIGHT GREY	GCS-681	3		●			●	
LIGHT NAVY	GCS-697	4		●			●	
LIGHT PURPLE	GCS-668	4		●			●	
LIME GREEN	GCS-616	3		●			●	
NAVY	GCS-627	3		●			●	●
OLYMPIC BLUE	GCS-57	4		●			●	●
ORANGE	GCS-14	3		●			●	●
PEACOCK BLUE	GCS-77	4		●			●	●
PINK	GCS-643	2		●			●	
PURPLE	GCS-38	3		●			●	
RASPBERRY	GCS-133	3		●			●	
ROYAL REFLEX	GCS-687	4		●			●	
RUBY RED	GCS-53	4		●			●	●
SEAFOAM	GCS-386	3		●			●	
SILVER	GCS-620	3		●			●	
SUNFLOWER YELLOW	GCS-625	4		●			●	
TAN	GCS-39	3		●			●	
TEAL	GCS-96	3		●			●	
TERRA COTTA	GCS-24	3		●			●	
TOMATO RED	GCS-13	4		●			●	●
TRAFFIC GREY	GCS-151	3		●			●	
UNIVERSITY BLUE	GCS-267	3		●			●	
VEGAS GOLD	GCS-145	3		●			●	
VIOLET PURPLE	GCS-628	3		●			●	
VIVID BLUE	GCS-017	3		●			●	
WHITE	GCS-10	4		●	●		●	
YELLOW	GCS-15	3		●			●	●
PROCESS CYAN	GCP-807	3		●			●	●
PROCESS MAGENTA	GCP-873	3		●			●	●
PROCESS YELLOW	GCP-805	3		●			●	●
PROCESS BLACK	GCP-812	3		●			●	●
BLUE	GCT-617	3		●			●	
BROWN	GCT-629	3		●			●	
BURGUNDY	GCT-49	3		●			●	
GOLD	GCT-105	3		●			●	
GREEN	GCT-116	3		●			●	
GREY/SPECTRASHADE	GCT-111	3		●			●	
ORANGE	GCT-614	3		●			●	
PLUM PURPLE	GCT-128	3		●			●	
RED	GCT-643	3		●			●	
SAPPHIRE BLUE	GCT-37	3		●			●	
TOMATO RED	GCS-13	3		●			●	
WHITE/SPECTRATINT	GCT-030	3		●			●	
YELLOW	GCT-625	3		●			●	
FLOOD COAT WHITE	GCM-010	4		●			●	
FLUORESCENT RED ORANGE	GCM-414	▲	●				●	
FLUORESCENT GREEN	GCM-416	▲	●				●	
FLUORESCENT YELLOW	GCM-415	▲	●				●	
JET BLACK	GCM-12	4		●			●	
METAL FLAKE	GCM-715	0.5		●			●	
PROCESS CYAN	CSP-807	3			50			
PROCESS MAGENTA	CSP-273	3			50			
PROCESS YELLOW	CSP-805	3			50			
PROCESS BLACK	CSP-12	3			50			
COBALT BLUE	CSS-37	3		●			●	
WARM RED	CSS-253	3		●			●	
BLACK	CSS-12	3		●			●	
BLUE MEDAL	GCM-747	▲	●				●	
GOLD MEDAL	GCM-731	▲	●				●	
RED MEDAL	GCM-783	▲	●				●	
SILVER MEDAL II	GCM-721	▲	●				●	25

▲ Recommended for interior use only.